

Preservation of e-journals at the *Koninklijke Bibliotheek*

**Hilde van Wijngaarden
Digital Preservation Officer**

*Koninklijke Bibliotheek/ National Library of the
Netherlands*

www.kb.nl/e-depot



Overview

- /// Deposit of electronic publications at the KB
- /// The e-Depot as a digital archive for international e-journals
- /// Current status of the e-Depot
- /// The e-Depot: how does it work?
- /// Access policy
- /// Plans for the future



Deposit of electronic publications at the KB

- /// In the Netherlands, there is no formal deposit law
- /// Publications deposited voluntarily
- /// Agreements with publishers
- /// While building the e-Depot, the agreement with Elsevier was renewed
- /// New agreement: deposit of e-journals no longer restricted to Dutch imprint
 - /// Elsevier: wanted a 'safe place' for their digital publications
 - /// KB: place of imprint not relevant for digital publications
- /// Kluwer signed the same kind of agreement
- /// Next step: deposit by international publishers



The e-Depot as a digital archive for international e-journals

- /// Agreements with individual publishers
- /// Publishers do not pay us, we do not pay them

- /// The KB promises to:
 - /// Do everything possible to keep the publications accessible
 - /// Maintain the integrity of the publications' content
 - /// Commit itself to the long-term storage and maintenance
 - /// Honor access policy as agreed upon with the publisher

- /// The publisher promises to:
 - /// Deliver their e-journals with metadata
 - /// Discuss preferred metadata and formats



Current status of the e-Depot

- /// Agreements signed with Elsevier Science, Kluwer Academic, BioMed Central and Blackwell
- /// New agreements in negotiation
- /// Operational since March 2003
- /// With Elsevier e-pubs, it processes 40,000 articles per day
- /// Currently over 2 million articles stored
- /// Scalable up to 200 TB (and even more...)



The e-Depot: How does it work?

/// On-line publications:

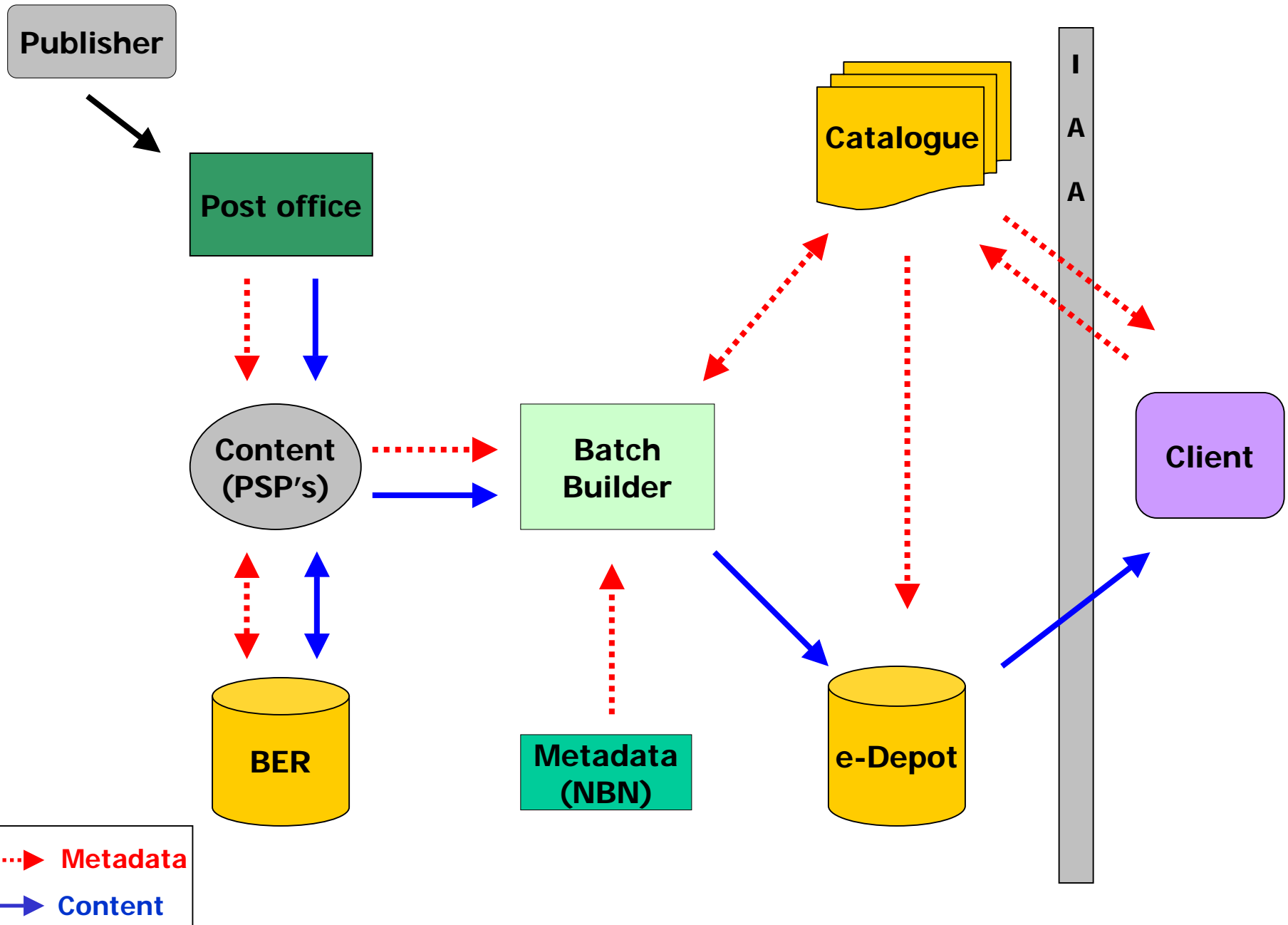
- /// Delivery through FTP or tapes
- /// Registration, CRC Check
- /// Metadata conversion
- /// Metadata stored in the central catalogue
- /// Storage in **e-Depot**, together with technical metadata

/// Off-line publications (installables):

- /// Installation on Reference Workstation
- /// Manual cataloguing
- /// Installation of entire image in **e-Depot**



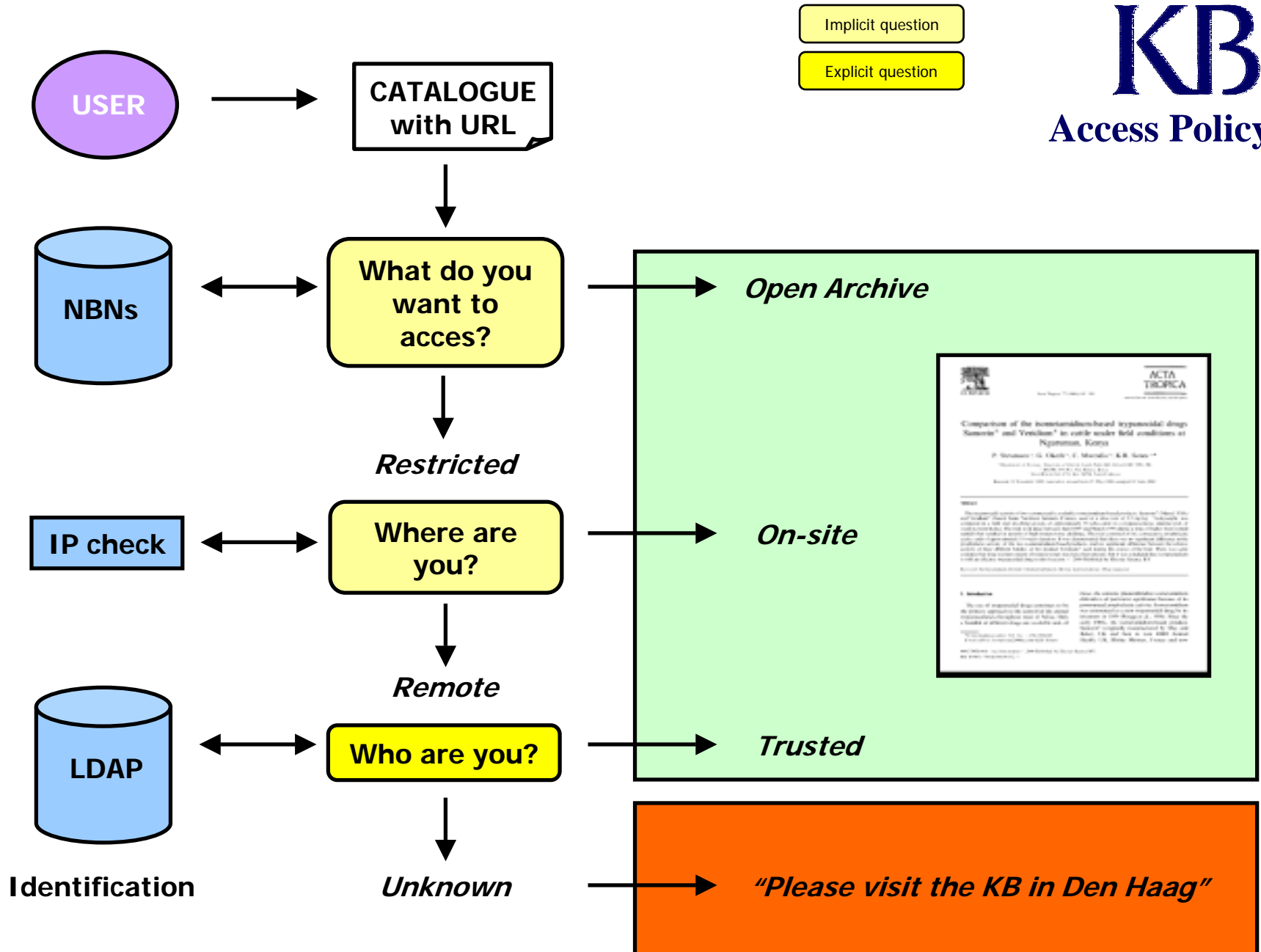
Preservation of e-journals



Access policy

- /// Access discussed with publisher
- /// On-site access only for Elsevier and Kluwer journals
- /// Open access for BioMed Central
- /// Delivery for Inter Library Loan on paper (fax or print)
- /// Back-up facility in case of emergency





Plans for the future (1):

Technical:

- /// **Generic procedure for loading (configurable post office)**
- /// **Integration with LTP modules**
- /// **Providing permanent access through R&D on strategies and tools**
- /// **Enhancing the system through co-operation with other DIAS-implementers**



Plans for the future (2):

- /// More publishers, more content
- /// Other kinds of deposit: national projects
 - /// DARE: Digital Academic Depositories
 - /// Tiff-archive: Storing tiff masters for Dutch cultural heritage institutions
- /// Certification as a 'Trusted Depository'
- /// International co-operation: Safe place strategy



Any questions?

